



Soft Start



Installation, Operation & Application Guide

For further information visit us at www.active-controlsllc.com



Important Safety Information



- Fully Insert all plugs.
- Keep away from children and pets.
- Do not repair or modify.
- For outdoor use only.
- Store indoors when not in use.

Features

- ✓ Starting current reduction (50%) and programable startup power.
- ✓ Mobile app is Bluetooth-enabled and compatible with iOS and Android devices.
- ✓ Built in Surge protection.
- ✓ Waterproof, UV-proof module resists weather extremes.
- ✓ Anti-theft design to easily secure to power source.
- ✓ Diagnostic LED indicators inside of box for technicians.

Application

The ACS30WS (30amps), ACS20WS (20amps) is intended for recreational vehicle (RV), residential, and commercial applications. These devices will monitor system health including current, voltage, frequency, and programmable startup power.

SPECIFICATIONS

- **Inputs:** L1 & N.
- **Nominal Voltage:** 120 VAC, 50-60 Hz.
- **Over Voltage Limits:** 120 VAC nominal=140 VAC.
- **Under Voltage Limits:** 120 VAC nominal=100 VAC.
- **Surge Protection:** 2100 Joules.
- **Current:** Maximum nominal= 30 AMP.
- **Over Current Limits:**
ACS20WS = 20A.
ACS30WS = 30A.
- **Operating Temperature:** -4°F to 176°F (-20°C to 80°C)
- **Storage Temperature:** -40°F to 149°F (-20°C to 65°C)
- **Humidity:** 5-95% Non-considering.
- **Weight:** 2.1 Lbs. (0.95kg).
- **Warranty:** One year limited warranty (standard)

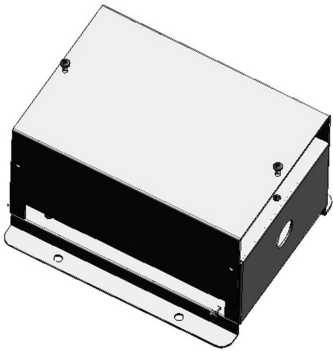
Installation

1. Wire unit into RV or Motorhome power downstream of any transfer switch.
2. Please note the Line In side vs the Line out and wire accordingly. The unit will not operate if line in is wired to the output side.
3. Allow self-diagnostic function to determine if voltage, frequency is correct then the source power is ready to use and outputs turn on.
4. After 45-60 seconds the output will feed power to the RV breaker panel.
5. If the Output shuts off and power to the RV/house/boat is off, that indicates a Power Alert related to Current, Voltage or any other fault that has occurred. The Mobile App will show the cause of the shutdown. The unit will automatically reset and turn on the outputs after a 2-3 minute delay.



Scan to see a full specification, installation, & more on our website

Dimensions



Length = 6"
Width = 5"
Height = 3"

Performance

The ActiveStart is a unique device that is installed in series with the loads. This is quite different from a standard softstart that is wired directly to a motor and only has one function which is to start the motor.

The ActiveStart responds to an inductive load which generates a large spike in current and quickly current limits the device while initiating a softstart of the load. This is done without disturbing other appliances that are currently running on the same power source.

The Graphs below showcase this functionality:

